

COSTAMAR 10

YOUR BREATHTAKING ISLAND HOME





OVERVIEW

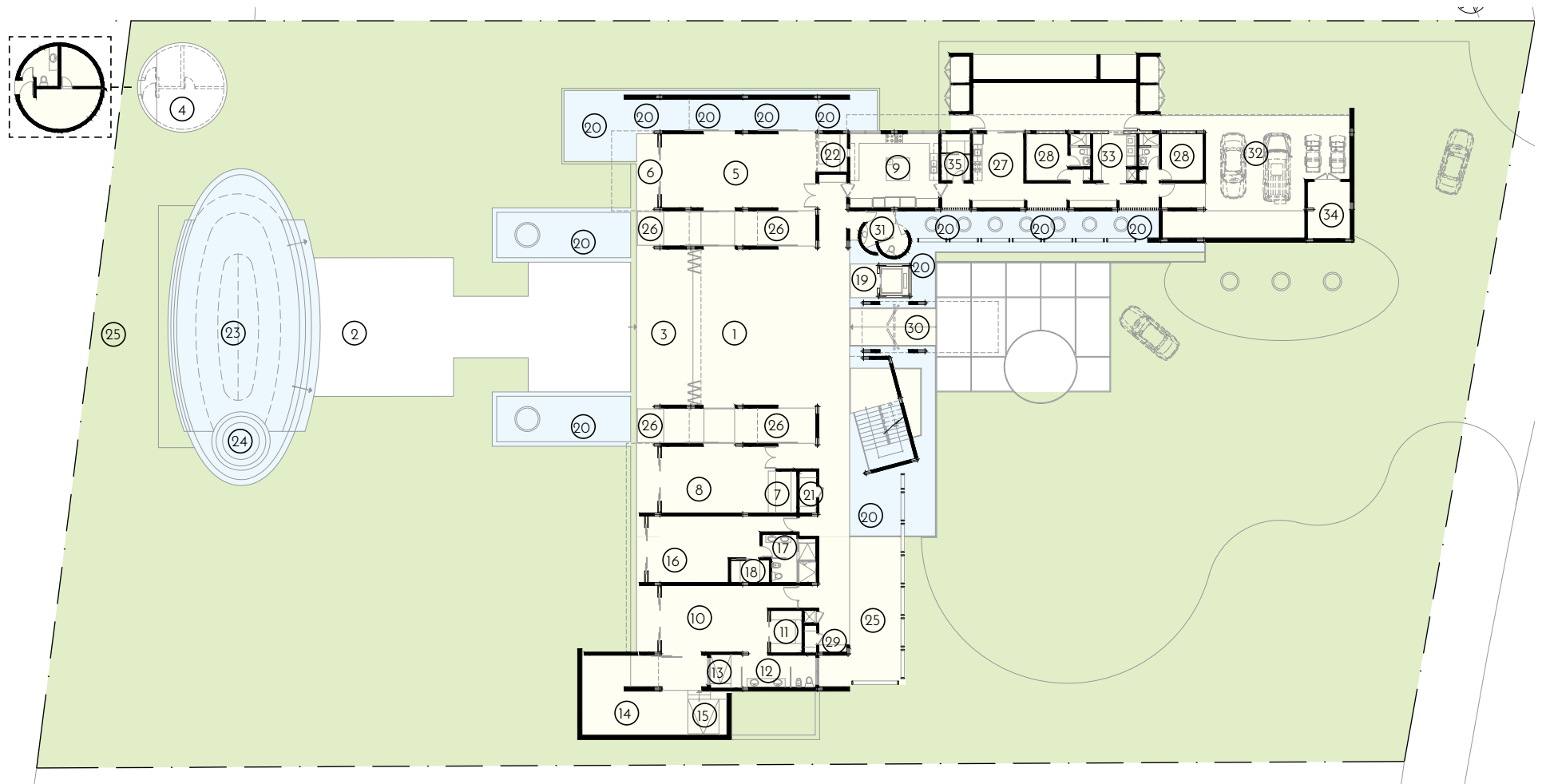
Costamar 10 is a world of leisure without limits - Caribbean living at its best. Reflective pools, a grand foyer, vaulted artisanal ceilings, frontage on the Caribbean Sea, and a lush tropical surrounding-nature combine to delight all your senses, bringing a feeling of exceptional peace and tranquility. Your first impression is also your lasting sensation, and it will be your long-held memory. Through your eyes, the windows to your soul... you experience visual infinity! Your other senses are up for a similar treat. Within this magnificent estate, the "WOW" factor is everywhere and ever-present, and yet it remains true to its hospitable soul, as it exudes the warm ambiance of a loving family home. Spend the day in the circular deck; relax by the pool; watch your children play in the gardens. In the evening, relax in the grand living room or outdoor terraces - - - sensations of infinity are everywhere. There is no other property available today in Casa de Campo like Costamar 10. This modern, contemporary and magnificent home not only holds the combination of exceptional quality, meticulous details and captivating views, it is also completely new, fully-furnished and equipped, ready to move in and be enjoyed.



HOME DETAILS

OWNER'S MASTER SUITE	1
MASTER SUITES	2
JUNIOR SUITES	3
BATHROOMS	9
ESTATE LEVELS	3
POOLS	2
JACUZZI	1
TOTAL LIVING SPACE	15,800 SQ FT (1,500 METERS)
LOT	51,668 SQ FT (4,800 METERS)
YEAR BUILT	2016
HIGHLY TRAINED FULL-SERVICE STAFF	





LEVEL 1

GATHERING SPACES

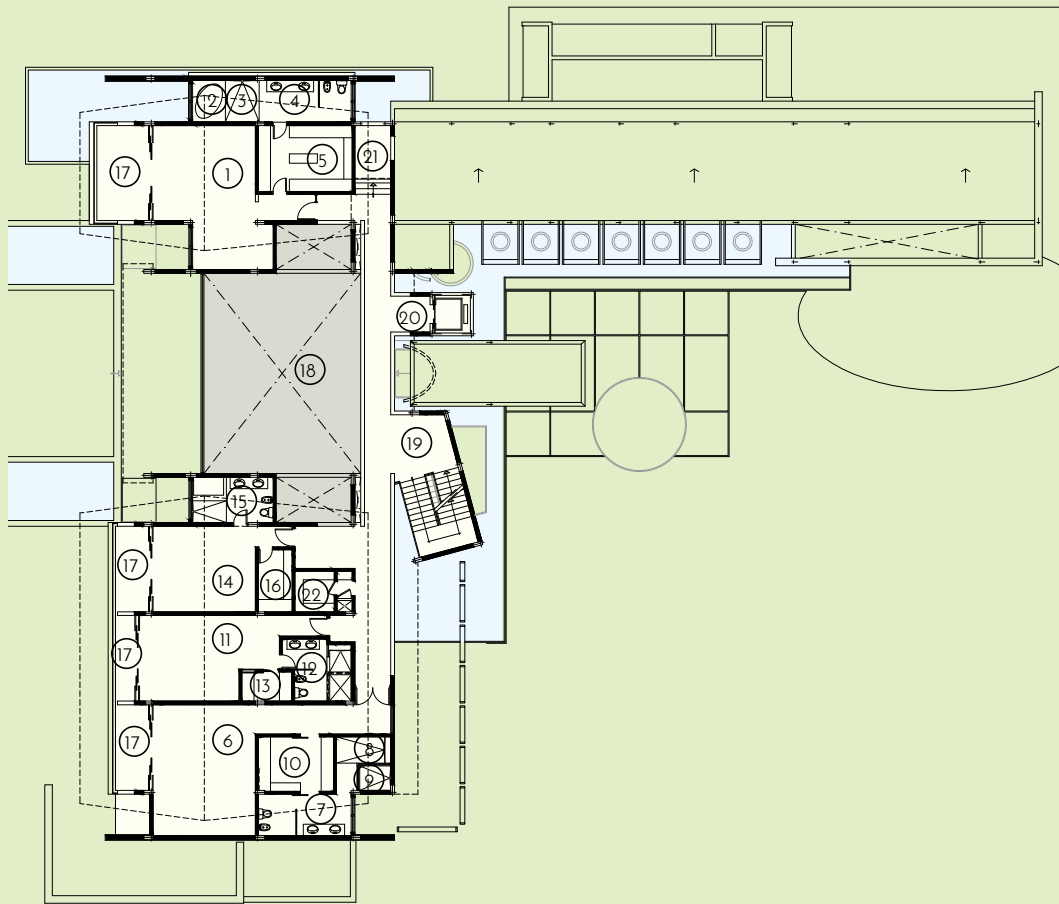
1. GRAND LIVING ROOM
2. TERRACE & SEATING
3. OUTDOOR SHADED TERRACE
4. SUNSET DECK & HIDDEN WASHROOM
5. DINING ROOM
6. OUTDOOR DINING
7. BAR
8. ENTERTAINMENT ROOM
9. KITCHEN

PRIVATE SPACES

10. MASTER SUITE II
11. MASTER SUITE II WALK-IN CLOSET
12. MASTER SUITE II BATHROOM
13. MASTER SUITE II DOUBLE RAIN SHOWER
14. PRIVATE GARDEN
15. MASTER SUITE II OUTDOOR DOUBLE RAIN SHOWER
16. JUNIOR SUITE I
17. JUNIOR SUITE BATHROOM
18. JUNIOR SUITE CLOSET

UNIQUE FEATURES

19. ELEVATOR
20. REFLECTIVE POOLS
21. GOLF STORAGE CLOSET
22. WINE CELLAR
23. INFINITY POOL
24. JACUZZI
25. OCEAN FRONT
26. INDOOR GARDENS
27. STAFF KITCHEN
28. STAFF QUARTERS
29. LINEN CLOSET
30. GRAND FOYER
31. POWDER ROOM
32. GARAGE
33. LAUNDRY
34. STORAGE
35. PANTRY



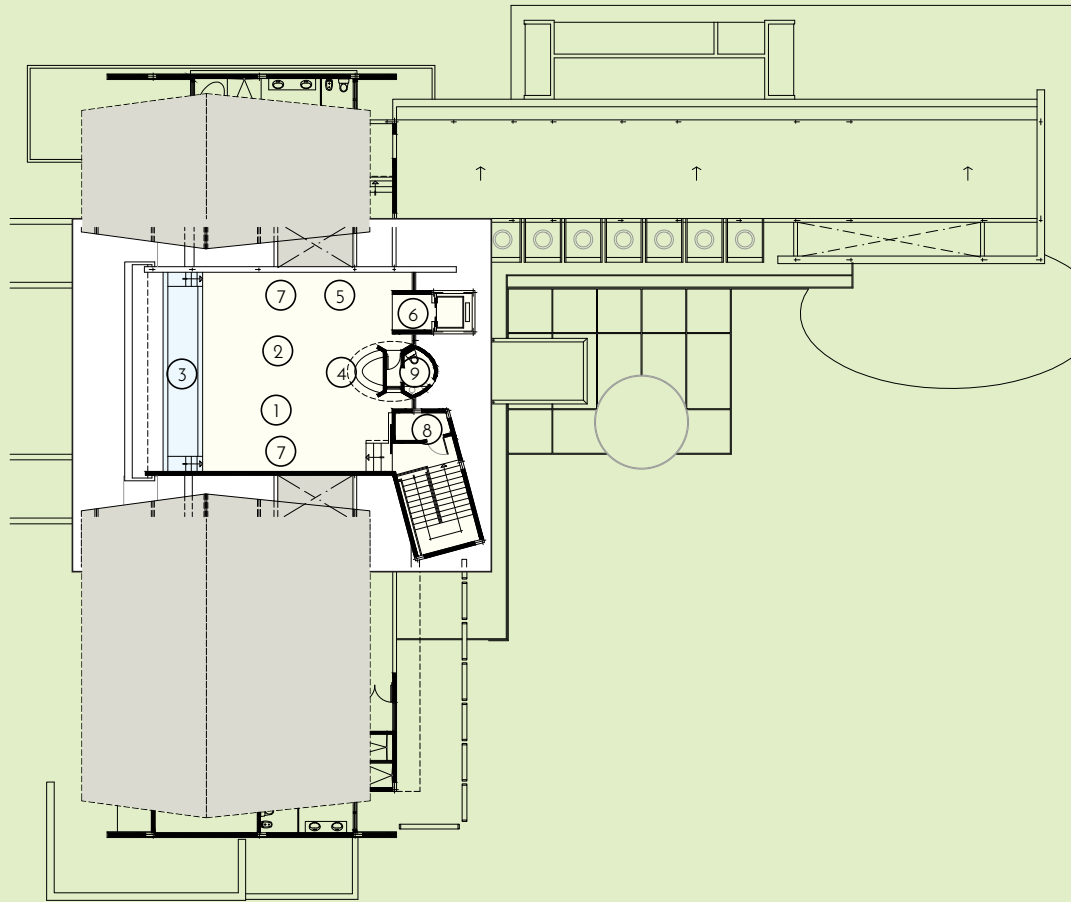
LEVEL 2

PRIVATE SPACES

- | | |
|---|--|
| 1. OWNERS MASTER SUITE | 10. MASTER SUITE I WALK-IN CLOSET/VANITY |
| 2. OWNERS MASTER SUITE TUB | 11. JUNIOR SUITE II |
| 3. OWNER'S MASTER SUITE DOUBLE RAIN SHOWER | 12. JUNIOR SUITE II BATHROOM |
| 4. OWNERS MASTER SUITE BATHROOM | 13. JUNIOR SUITE II WALK-IN CLOSET |
| 5. OWNER'S MASTER SUITE WALK-IN CLOSET/VANITY | 14. JUNIOR SUITE III |
| 6. MASTER SUITE I | 15. JUNIOR SUITE III BATHROOM |
| 7. MASTER SUITE I BATHROOM | 16. JUNIOR SUITE III WALK-IN CLOSET |
| 8. MASTER SUITE I TUB | |
| 9. MASTER SUITE I SHOWER | |

UNIQUE FEATURES

- 17. BALCONIES
- 18. OPEN TO BELOW
- 19. OPEN TO STAIRCASE
- 20. ELEVATOR
- 21. GARDEN
- 22. LINEN CLOSET



LEVEL 3

GATHERING SPACES

1. ROOFTOP DECK & LOUNGE
2. ROOFTOP DINING
3. PLUNGE POOL
4. FULL BAR

UNIQUE FEATURES

5. BBQ GRILL
6. ELEVATOR
7. SURROUND SOUND MUSIC
8. STORAGE SPACE
9. BATHROOM





QUICK FACTS

- Total living space 15,800 square feet (1,500 square meter)
- Lot 51,668 square feet (4,800 square meter)
- Overlooking the Signature Tee of Teeth of the Dog Golf Course
- Grand Living Room with 20-foot cathedral sculptured wood ceiling
- Entertainment Room with 72-inch HDTV and surround sound music system
- Indoor Dining Room that seats 18, Lounge Area and Wine Cellar
- Professionally designed, insulated, humidity and temperature-controlled Wine Cellar with capacity of more than 500 bottles
- Indoor/ Outdoor Dining Areas
- Rosenthal Dinnerware
- Indoor/Outdoor Reflective Pools
- Indoor/Outdoor Gardens
- Trellis-shaded Terrace
- All 6 bedrooms have uninterrupted ocean views with its own private balcony
- All 2nd floor suites bedrooms enjoy a double-height ceiling
- 3 King size beds Suites
- 3 Double Queen size beds Suites
- Frette bed linens and towels
- Lutron automatic blackout shades in all Suites
- All Suites are fully air-conditioned with Nest-controlled thermostats
- All Suites have HDTV's
- Vanities in Owners Suite and Master Suite II
- Owners Master Suite Walk-In Closet with private view to Indoor Garden
- Private Garden and Outdoor Shower in Master Suite II
- Solid, double 15-foot high entrance door
- Sunset Circular Deck
- Over-sized glass doors overlooking uninterrupted ocean views from every Suite
- Rooftop Deck and full bar, BBQ, surround sound music system
- Otis Elevator for 8
- Unique and custom-designed Golf Closet
- State-of-the-Art Kitchen and Secondary Kitchen
- Fully Trained Service Staff
- Private Staff Quarters
- Large Capacity Laundry
- High-Speed Internet
- Digital Cable TV,
- Highly sophisticated music system throughout the property
- 70-foot climate controlled, non-chemical swimming pool with a hydro-therapy Jacuzzi
- Tucci Umbrellas
- Climate-controlled Plunge Pool
- Garage for cars and golf carts
- Customized illumination
- Carefully designed landscaping with diverse varieties of exotic palm trees, bougainvilleas, gingers, heliconas, anthuriums, white alheli frangipani
- Exotic native woods and Italian marble throughout
- Art pieces by Internationally known Caribbean ceramic artist, Agustin de Andino
- In-house massages, manicures, pedicures





CASA DE CAMPO RESORT

- Golf in 3 Championship Pete Dye Golf Courses: Teeth of The Dog, The Links, Dye Fore
- Tennis in 13 Har-Tru Immaculate Courts
- Marina with Capacity for over 300 boats with slips for 15 foot to 250 foot Mega Yachts
- La Romana International Airport 5 minutes away from the Resort
- Beach Club
- World Class Shooting Center
- Equestrian Center
- Horseback Riding
- Biking
- Boating and Sailing
- Sports Fishing
- Swimming, Snorkeling
- Kayaking
- Stand Up Paddle Boarding
- Polo
- Kid's Club
- Dance Lessons
- Cooking Classes
- Gym and Personal Training
- Spa
- Yoga
- Mediation
- Pilates
- Zumba
- CrossFit
- Martial Arts
- Altos de Chavón Amphitheatre
- Museums
- Design School Affiliated to New York Parsons School of Design
- Restaurants
- Spanish Tutoring
- Excursions